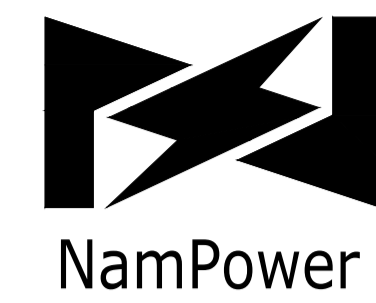


# NAMPOWER



INSERT MANUFACTURER'S NAME

4-Ø8 HOLES

**NOTE**

1. ALL DIMENSIONS ARE IN MILLIMETERS.
2. MATERIAL : STAINLESS STEEL
3. PLATE THICKNESS : 1.2mm(MIN)
4. LETTER COLOR : BLACK
5. % IMPEDANCE , SOUND LEVEL & DATE OF MFG. WILL BE ENGRAVED AFTER FAT
6. FONT SIZE : 3mm(MIN)

VOLTAGE RATING [kV]	
H.V	
M.V	
L.V	

MVA RATING[MVA]			
H.V	M.V	L.V	
ONAN			
ONAF			

### THREE PHASE POWER TRANSFORMER

% POSITIVE SEQUENCE IMPEDANCE AT 40MVA			
	MIN TAP	PRINC TAP	MAX TAP
H.V.-M.V			
H.V.-L.V			
M.V.-L.V			

BUSHING INFORMATION		
	MANUFACTURER	TYPE NUMBER
H.V		
M.V		
N		
L.V		

TEMPERATURE RISE AT ALTITUDE OF 1800m [K]	
TOP OIL	
AVERAGE WINDING	
HOT SPOT	

INSULATION LEVEL [kV]			
	WINDING		BUSHING
	LI	AC	LI
H.V			
M.V			
L.V			

MATERIAL	
INSULATING OIL	
WINDING	

RATED FREQUENCY [Hz]	
COOLING METHOD	
DESIGNED ALTITUDE	

% ZERO SEQUENCE IMPEDANCE AT 40MVA			
	MIN TAP	PRINC TAP	MAX TAP
H.V.-M.V			
H.V.-L.V			
M.V.-L.V			

OLTC INFORMATION	
MANUFACTURER	
TYPE	

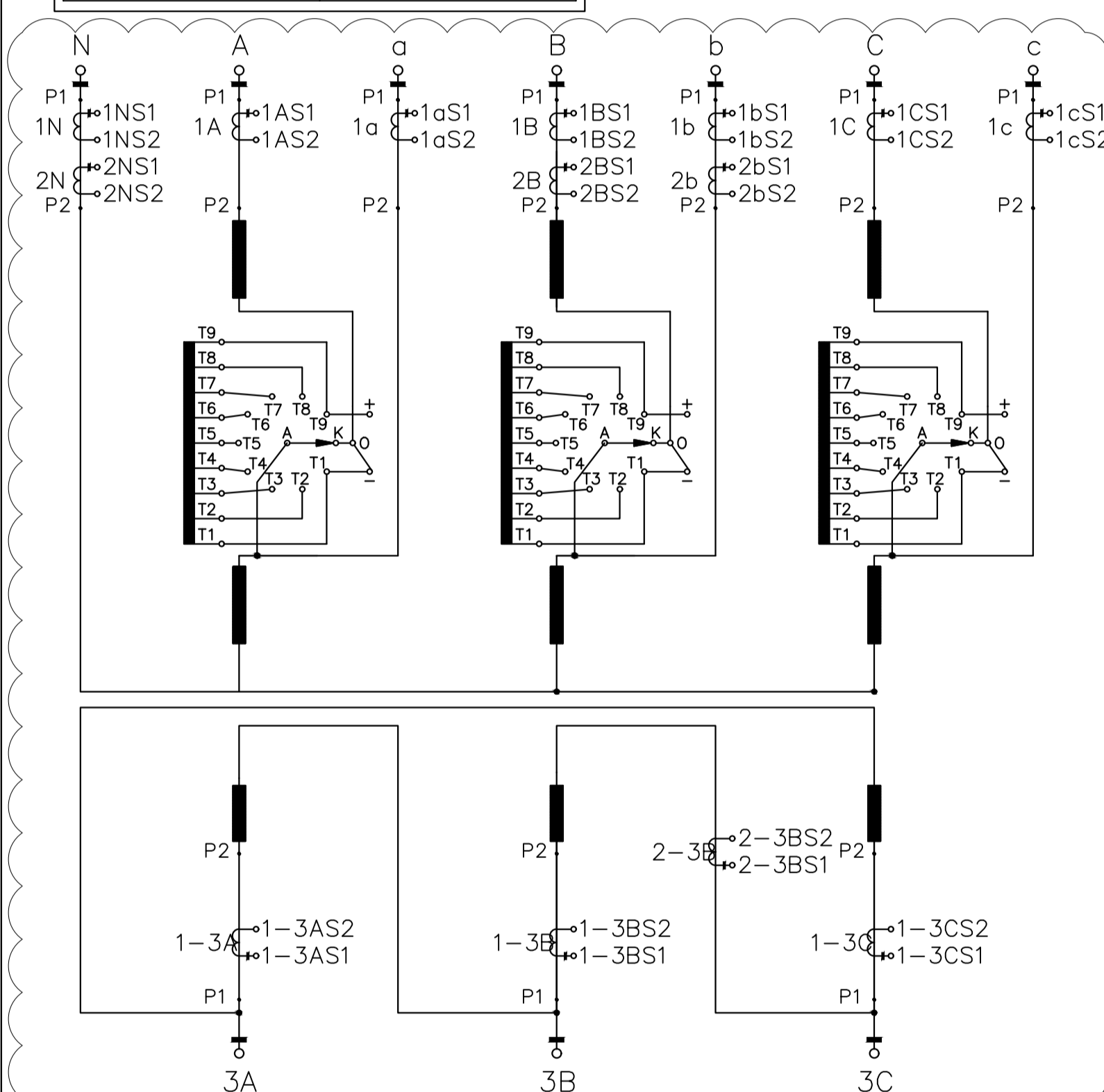
#### MASSES [Kg] / VOLUMES [L]

TOTAL WEIGHT(WITH OIL)	
SHIPPING(WITHOUT OIL)	
CORE AND COIL	
TANK AND FITTING	
OIL TOTAL	
OIL IN TANK	
OIL IN COOLER	
OIL IN CONSERVATOR	

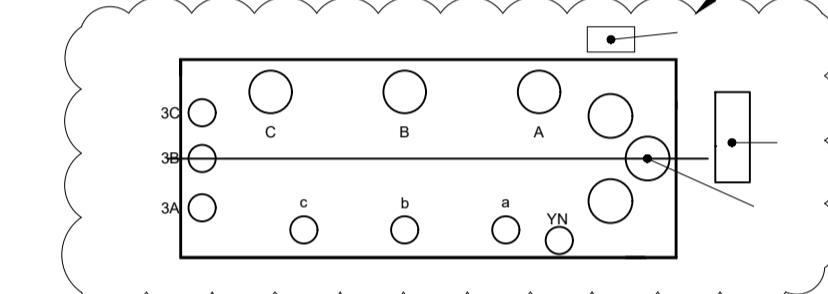
SYSTEM FAULT LEVEL FOR SHORT CIRCUIT CALCULATION	
HV	
MV	
LV	

CORROSION PROTECTION LEVEL	
IEC/NAMPOWER SPECIFICATION	

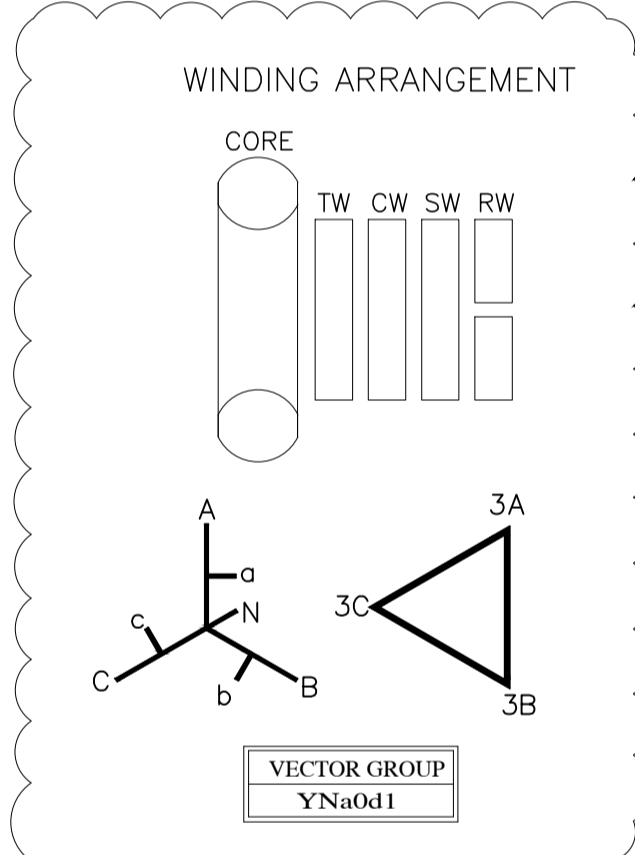
SOUND LEVEL AT NO-LOAD WITH COOLING EQUIPMENT	
	_____ dB



INSERT CORRECT DRAWING TERMINAL ARRANGEMENT



USE CORRECT TRANSFORMER DETAILS



INSERT CORRECT TRANSFORMER DETAILS FOR A NON AUTO TRANSFORMER CHANGE WINDINGS TO LWV, MVV, HVV

TERMINAL	VOLTAGE [kV]	CURRENT [A] MVA RATING	ON LOAD TAP CHANGER	
			POSITION	K A
HV				
MV				
LV				

#### CT INFORMATION

BCT NO.	RATIO(A)	TAP CONNECTION	CLASS	BURDEN(VA)	Vk(v)	Rct(ohm)	1m(mA)
1A, 1B, 1C							
2B							
1a, 1b, 1c							
2b							
1N							
2N							
1-3A, 1-3B, 1-3C							
2-3B							

**WARNING**  
THE CONSERVATOR CONTAINS A BAG

1. MAXIMUM OPERATING PRESSURE OF LIQUID PRESERVATION SYSTEM INSIDE BOTTOM OF TANK :
2. THE INSULATING OIL CONTAINS NO DETECTABLE LEVEL OF PCB (LESS THAN 1 PPM) AT THE TIME OF MANUFACTURE.
3. THIS TRANSFORMER IS SUITABLE FOR OVERLOADS IN ACCORDANCE WITH IEC 60076-7

COUNTRY OF MANUFACTURING

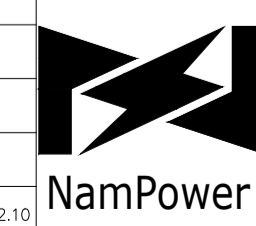
NAMPOWER PO No. :	NAMPOWER ASSET No. :
APPLIED STANDARD :	SERIAL No. :
INSTRUCTION BOOK No. :	DATE OF MFG. :

- CUSTOMER : NAMPOWER  
 - PROJECT NAME :  
 - Procurement Reference No. :  
 - [Manufacturer] Order No. :  
 - Spec : [3ph 50Hz 40MVA 220/66/22kV Auto w/OLTC(HV), ONAN/ONAF]

REV	AUTH	DATE	REVISIONS	BY	CHK'D
03	-	20.03.11	REVISED BY COMMENTS		
02	-	20.02.07	REVISED BY COMMENTS		
01	-	20.01.22	REVISED BY COMMENTS		

CHK'D	SS	19.12.10	1	1	12.44/16222	REV
SCALE	1:50	Page	Total			03



Sample Rating and Diagram Plate for POWER TRANSFORMERS